

		ZERO 600S	ZERO 700S	ZERO 800S	500D	600D	700D	800D	1000D	20D	30S
Clamping force	kN	180	240	250	120	180	240	320	320	300	320
Carriage stroke	mm	600	700	800	500	600	700	830	1000	700	750
Dry cycle time	sec.	3,0	3,2	3,3	2,6	3,0	3,2	3,3	4,0	3,8	3,8

MOULD DIMENSIONS

			ZERO 600S	ZERO 700S	ZERO 800S	500D	600D	700D	800D	1000D	20D	30S
Max mould width	A	mm	595	695	795	495	595	695	825	995	695	700
Max mould height	B	mm	450	450	450	380	450	450	450	500	650	750
Half mould depth	C	mm	175	175	175	150	175	175	175	200	230	250
Daylight opening	E	mm	200	200	200	200	200	200	200	250	240	400
Carriage opening	D	mm	550	550	550	500	550	550	550	650	700	900

*with mould not exceeding above top of platen

BOTTLE MAXIMUM DIMENSIONS

			ZERO 600S	ZERO 700S	ZERO 800S	500D	600D	700D	800D	1000D	20D	30S
Max bottle thickness	S	mm	140	140	140	140	140	140	150	300	250	350
Max bottle diameter	Ø	mm	140	140	140	140	140	140	150	300	250	350
Max bottle height	H	mm	325	325	325	315	325	325	325	350	450	550

HEAD CENTRE DISTANCES | MAXIMUM BOTTLE WIDTH

	Heads	CD	W	CD	W	CD	W	CD	W	CD	W	CD	W	CD	W	CD	W	CD	W	CD	W	CD	W	
CD : Centre distance W : Max bottle width	1	\	310	-	-	-	-	-	-	\	310	-	-	-	-	-	-	-	350	-	450			
	2	270	240	330	290	-	-	230	200	270	240	330	290	-	-	-	-	330	290	-	-			
	3	180	150	215	175	250	210	150	125	180	150	215	175	250	210	-	-	-	-	-	-			
	4	135	110	160	130	185	155	110	95	135	110	160	130	185	155	235	205	-	-	-	-			
	5	105	85	125	100	145	120	85	70	105	85	125	100	145	120	185	160	-	-	-	-			
	6	85	65	105	85	120	100	70	55	85	65	105	85	120	100	155	135	-	-	-	-			
	7	75	60	90	75	100	85	-	-	75	60	90	75	100	85	130	115	-	-	-	-			
	8	65	50	75	60	90	75	-	-	65	50	75	60	90	75	115	100	-	-	-	-			
	9	-	-	70	55	80	65	-	-	-	-	70	55	80	65	100	85	-	-	-	-			
	10	-	-	60	50	70	60	-	-	-	-	60	50	70	60	90	80	-	-	-	-			
	12	-	-	-	-	60	50	-	-	-	-	-	-	-	60	50	75	65	-	-	-	-		

EXTRUDER PLASTICIZATION CAPACITY

		40/26	50/26	60/26	70/26	80/26	90/26	100/26	120/26
Screw diameter / L:D ratio	mm	40/26	50/26	60/26	70/26	80/26	90/26	100/26	120/26
Maximum extruder output*	kg/h	45	65	85	115	180	215	325	455
Recommended output**	kg/h	34	49	65	87	137	163	247	346

* Maximum output is to be considered for 100% rpm with HDPE with HLMFI >15, 100% virgin pellets. ** Recommended output is at 80% of the maximum output with HDPE 70% virgin pellets + 30% regrind.

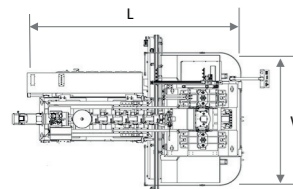
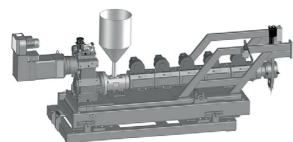
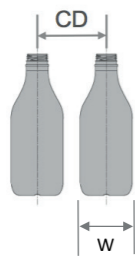
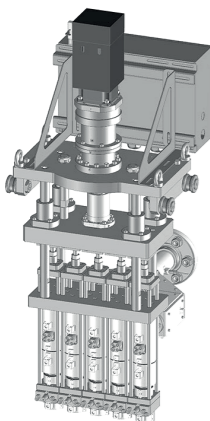
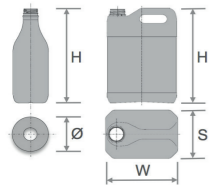
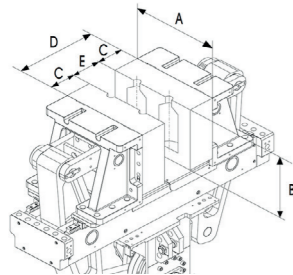
CONSUMPTION ESTIMATED UTILITIES DATA

Water operating pressure	bar	3 ÷ 5
Recommended water ΔP	bar	≤ 1,5
Air operating pressure	bar	8 ÷ 10
Estimate power consumption	Kw/kg	mono 0,27 coex 0,31

Consumption based on extruded material output (data could vary according with material specifications)

DIMENSIONS

			ZERO 600S	ZERO 700S	ZERO 800S	500D	600D	700D	800D	1000D	20D	30S
Width	W	mm	2.200	2.200	2.500	3.400	3.800	4.200	4.500	5.800	5.000	4.500
Length	L	mm	4.600	4.800	5.000	5.500	5.600	6.000	6.000	6.500	6.700	9.000
Height	H	mm	3.600	3.600	3.600	3.400	3.600	3.800	3.800	4.000	3.950	4.800



EXTRUSION PACKAGE

- Barrier screw profile with 26 L/D
- Water cooled gearbox with lubrication external system
- Automatic screen changer electric driven with HMI command
- Melt temperature and pressure transducers
- Ceramic heater bands with air cooled control

EXTRUSION HEAD

- Mobile head support to compensate for mechanical dilations and eliminate plastic leaks
- Individual weight adjustment for each parison with no machine stop
- Electric driven parison thickness control operating with linear screw on 400 points
- Electric driven parison cutting system with pinch bar devices
- Parison pre-blow with proportional control on HMI
- Ease of dies adjustment with mechanical internal sealing valve
- Availability for window stripe extruder installation
- Configurations availability:
monolayer/coex 3 ABA-ABC/coex 4/coex 6 /HMWPE

BLOWING STATION

- Compressed air with split circuit for container forming and general uses
- Compensation tank for forming and pre-blow air
- Individual adjustment of blowpin centring with no machine stop
- Quick changeover thanks to bayonet fixing system
- ALPHA COOL system with proportional valve for cycle improving

CLAMPING UNIT

- Shuttles gearboxes include auto-compensation of mechanical backlashes
- All stations are inclusive of absolute encoder, no machine calibration at start
- Shuttles movement operated with crank system
- Pick & place system by neck with expanders or cooled anti-ovalisation pins

GENERAL

- Centralized lubrication controlled by HMI
- B&R PLC with FHD 21" vertical screen
- Quick mould changeover thanks to internal crane and easy internal accessibility
- No need of ups for plc in case of emergency stop or power supply fail
- Accurate interior design to allow a safe and excellent access for operators

SERVICE (INTERNET CONNECTION REQUIRED)

- ALPHA CONNECT remote technical service with augmented reality support
- All inclusive 24 months warranty with 36 months extension option
- Customized all inclusive maintenance contracts with default OEE